



PART 1

ACTIVITY

- **EXAMINE** the attached pattern pages

Easy: Frank Leslie's Lady's Magazine Nov. 1866

Difficult: Frank Leslie's Lady's Magazine Oct. 1867

- **WHAT** is the pattern for?
- **HOW MANY** pieces are there on each page?
- **TRACE** out each individual pattern piece -
making sure to “unfold” the places where the
pattern has been “folded” to fit on the page.



FOLDED OVER

N° 1 BACK

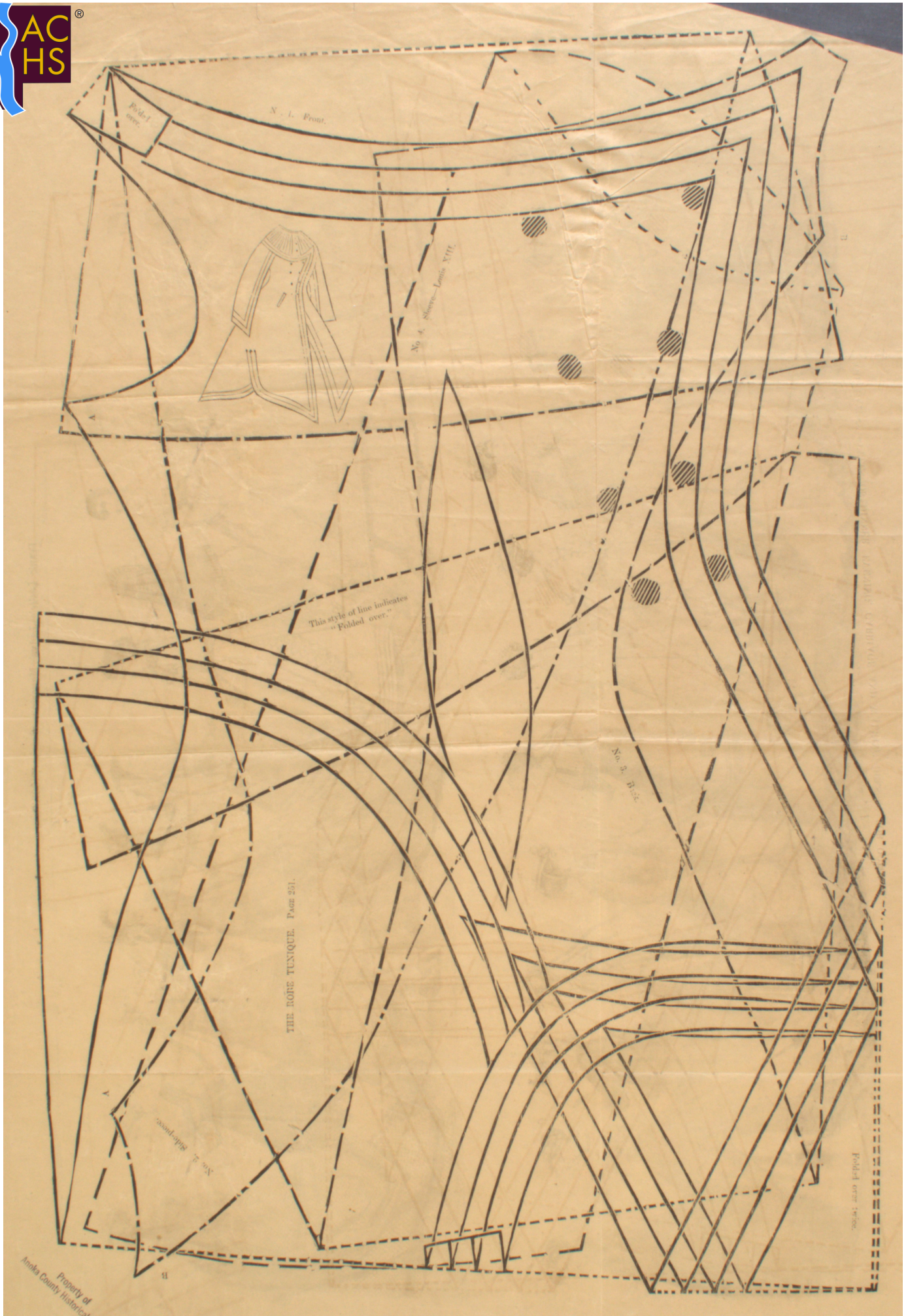
Pattern of a Marie-Antoinette Scarf

This Pattern is composed of three pieces :
 1. The back. 2. The front. 3. The sash end added to the back.

It is preferable to cut the back and the sash end in one piece ; but this is not strictly necessary, as the sash ends are intended to be looped together, as shown in our illustration, No. 6. The Marie-Antoinette Scarf (or *peau*, as it is called in France) is made of the same material as the dress with which it is worn, and is trimmed with a ruche either modern, and is trimmed with some material. It is also worn in white muslin, edged with frills simply hemmed ; sometimes it is worn in black silk, but in the latter case it is not considered dressy. For evening, it is either white tulle or tulle, edged made in either white tulle or tulle, and then it is hollowed out somewhat lower in the neck than our Paper Pattern. It forms a very effective trimming to a plain costume.

N° 2 FRONT

N° 3 SASH END



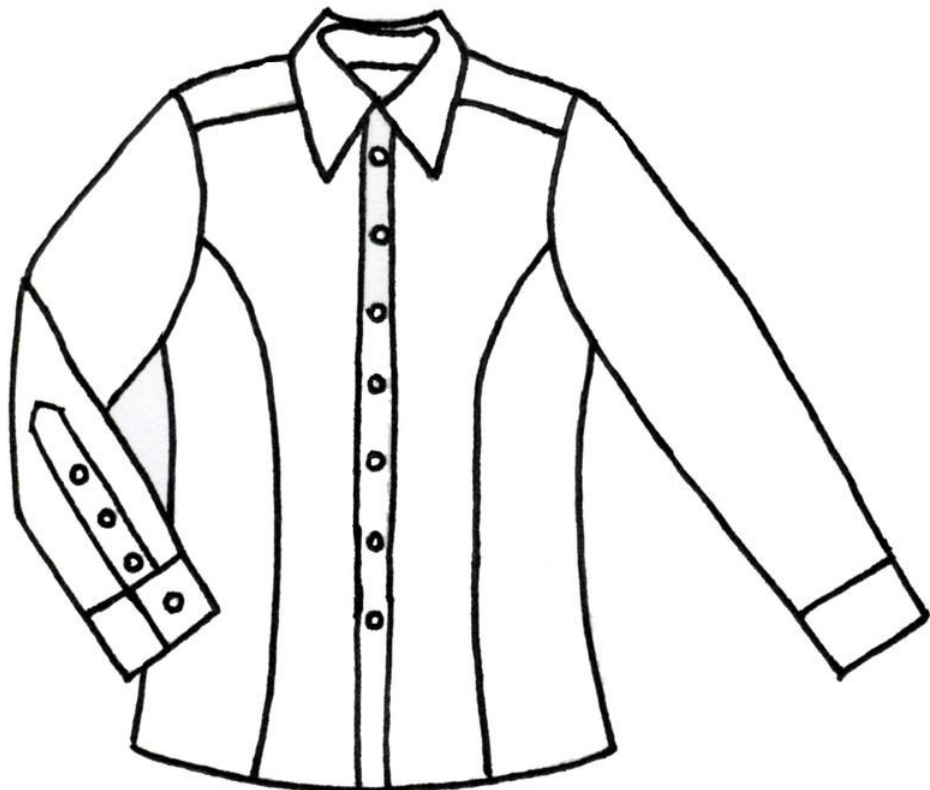
Frank Leslie's Lady's Magazine Oct. 1867
Object ID: 1990.0365.006

PART 2

ACTIVITY

- **FIND** a piece of clothing in your closet
- **HOW MANY** pieces make up this garment?
- **REMAKE** the pattern piece that went into making it

Either draw it out on a piece of paper while looking at the shape, or cut apart a piece of clothing that can no longer be worn.



ACTIVITY

- Cut out the pattern pieces given
- Lay out the pieces in any direction on your feedsack “fabric”

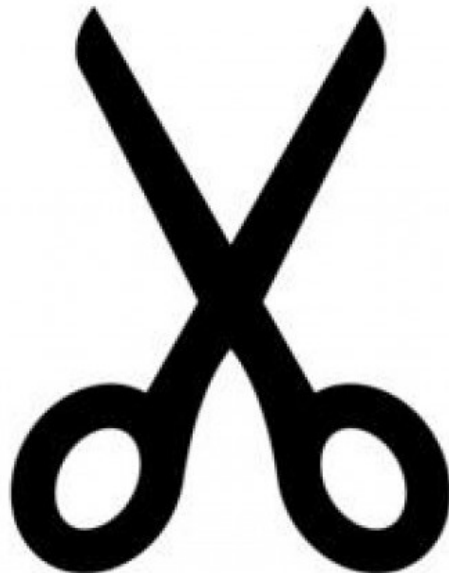
How little fabric can you use?

- Now layout the pieces with all of the arrows pointing in the same direction as the one given next to the printed fabric.

Did you have to change how you placed the pieces?

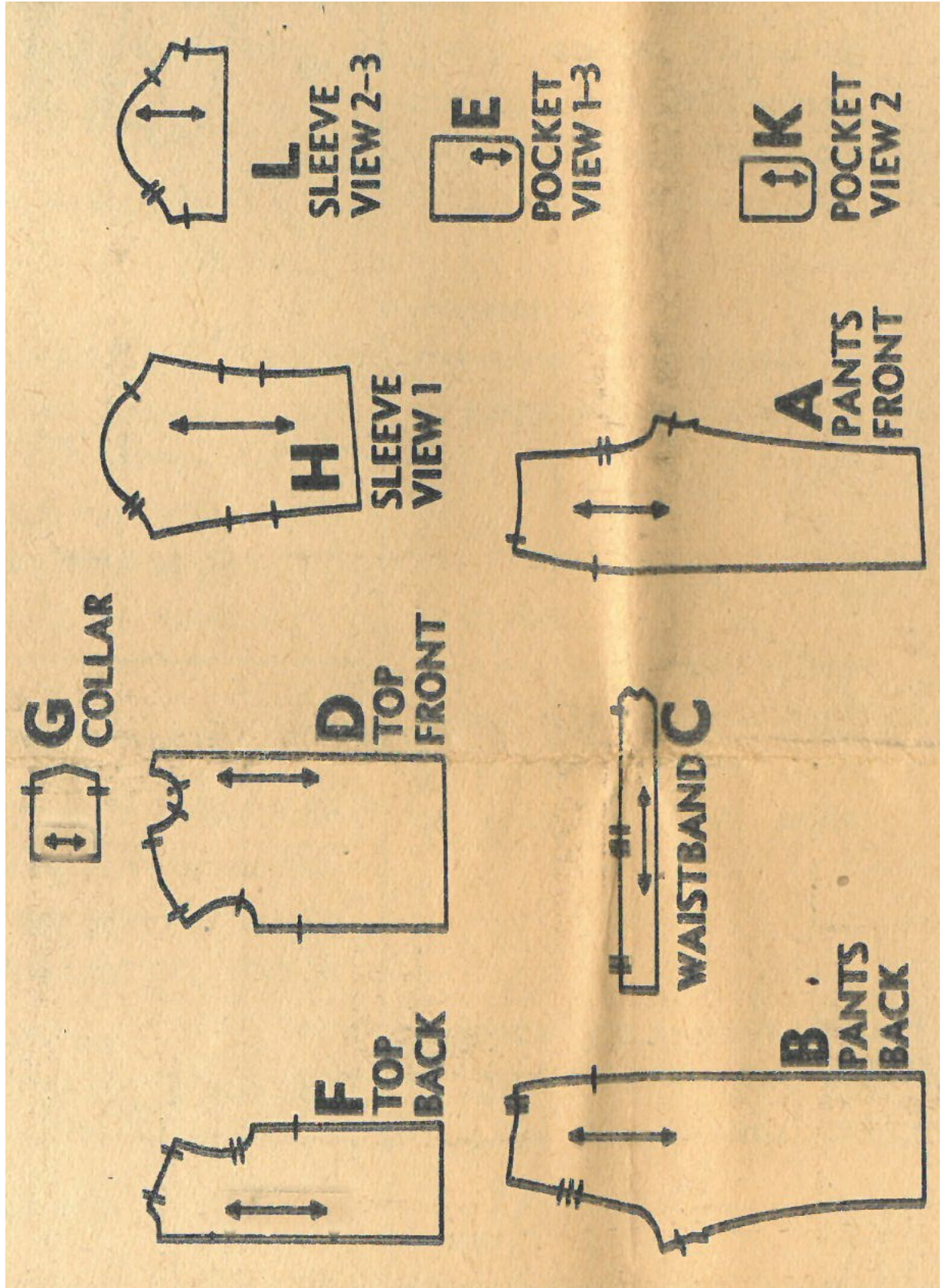
How much more fabric did you use?

* Placing pattern pieces on the “straight of grain” with all the arrows going in the same direction allows all your pieces to hang in the same way. If the grain is off, each piece may stretch or twist differently than the one next to it.



PART 3 ACTIVITY

**PATTERN
PIECES:**





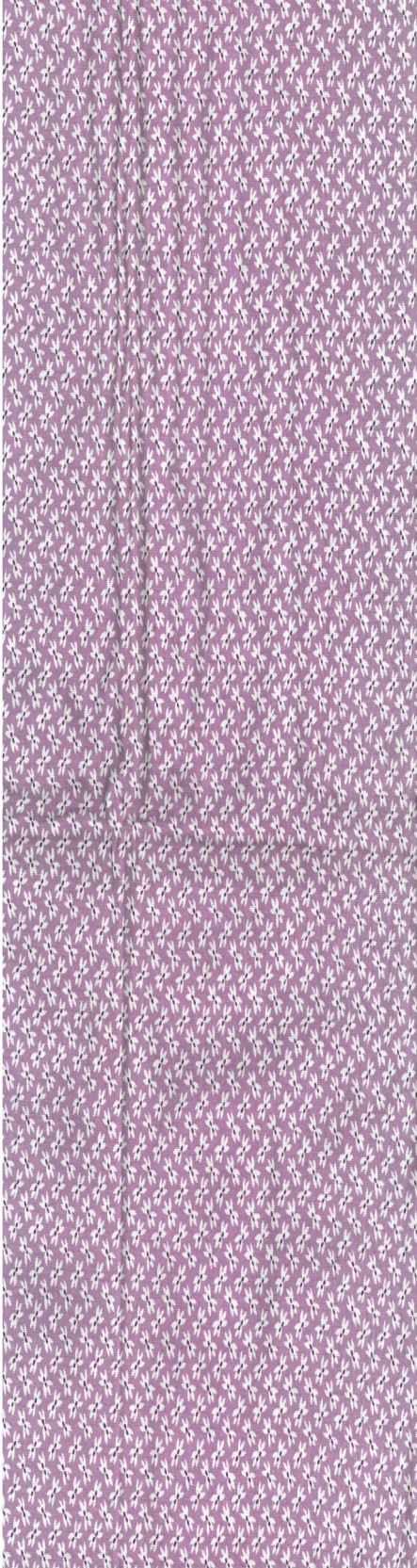
Anoka County
Historical Society

PART 3

ACTIVITY

Feedsack "Fabric" to lay out your pattern pieces

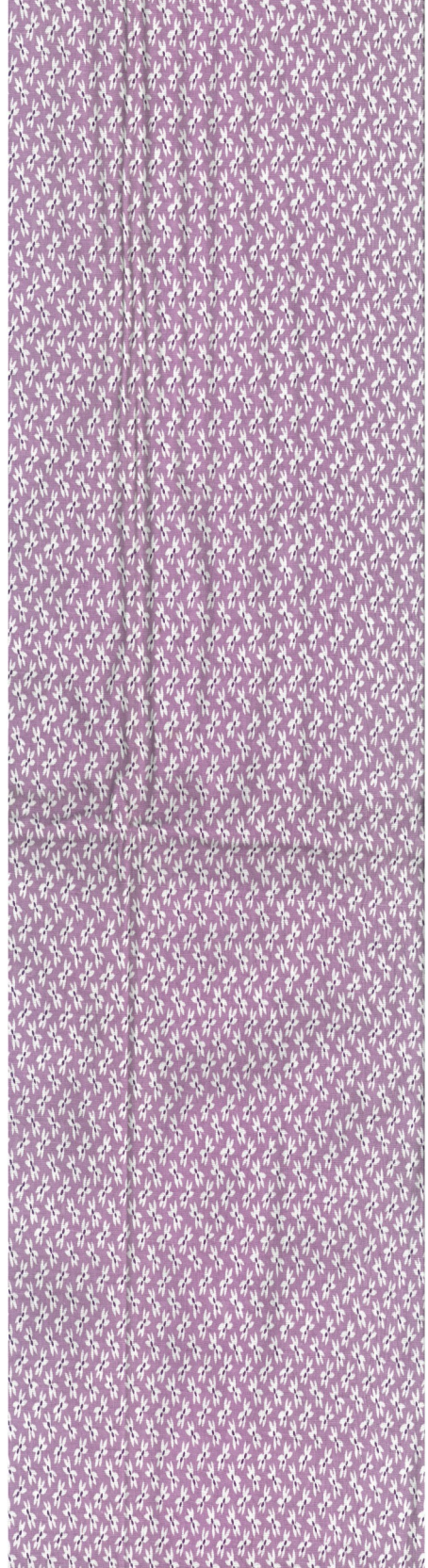
Fold of fabric this side



Straight of grain this direction

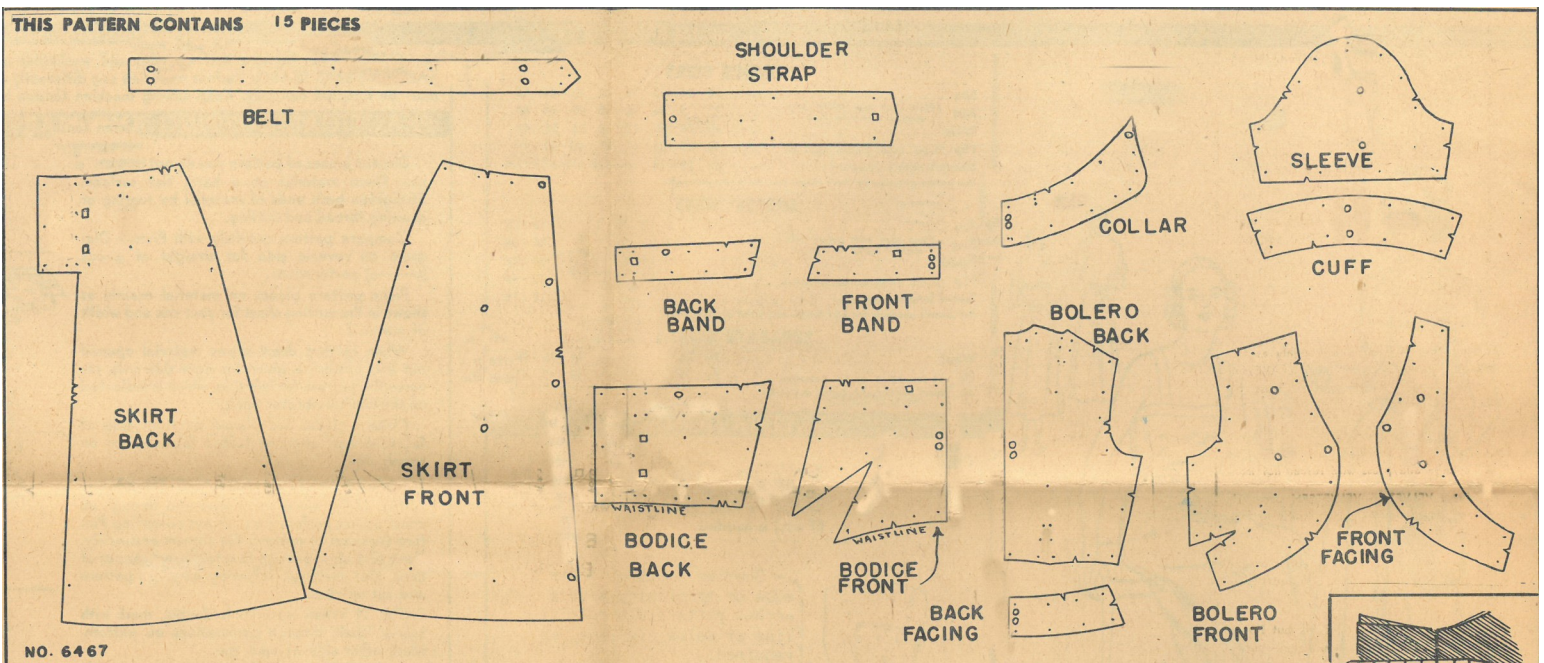


Fold of fabric this side



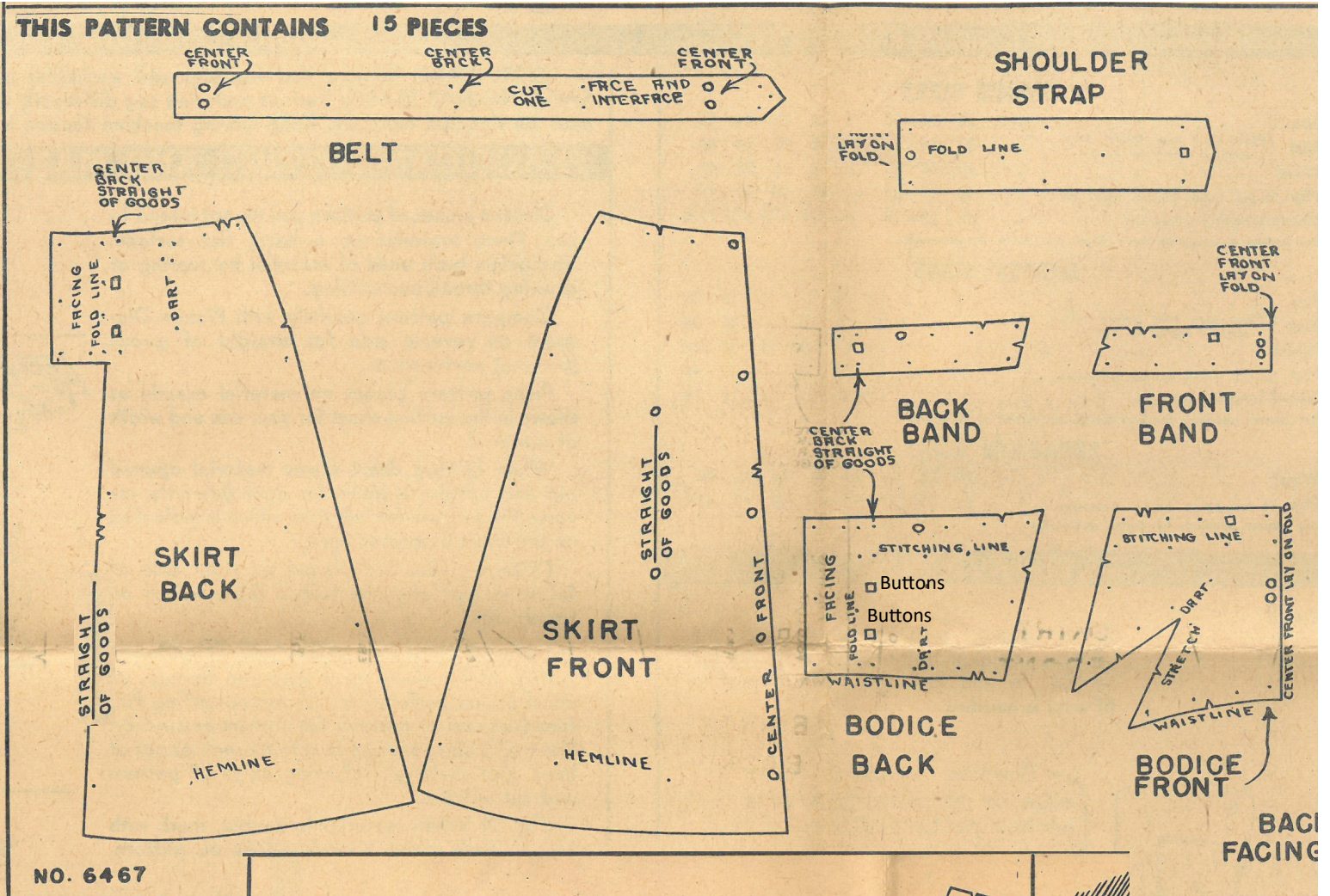
ACTIVITY

- **MATCH** the pattern pieces and markings to the correct description

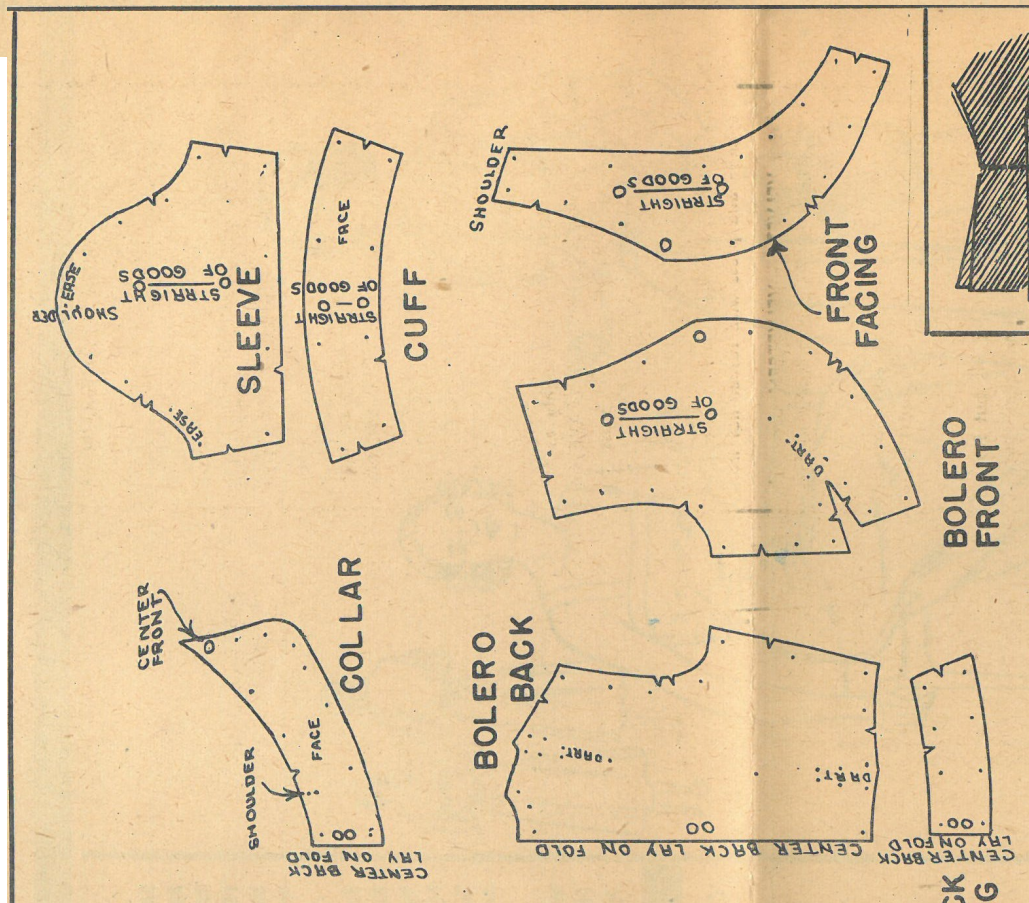


1. Find all: Straight of Grain marked here
2. Find all: Place on fold of fabric
3. Draw a line and match notches on top of sleeve to the matching notches on the Bolero
4. Place buttons here
5. Find as many darts as you can

PART 4 Answer Key



NO. 6467



CK G

HISTORY RESOURCES

- *A History of the Paper Pattern Industry: The home dressmaking fashion revolution* by Joy Spanabel Emery
- *The Victorian Dressmaker: Making Victorian Clothes for Women* by Izabela Pitcher Prior Attire
- *Make and Mend for Victory* by American Spool Company
- Vintage Pattern Wiki: VintagePatterns.fandom.com
- Soooo many more

REPRODUCTION PATTERNS & FASHIONS

- Vintage Vogue
- Retro Butterick
- Wearing History
- Sense & Sensibility Patterns
- Laughing Moon
- Truly Victorian
- Charm Patterns by Gertie
- Folkwear

PEOPLE TO FOLLOW

- **Dandy Wellington**—Jazz musician, vintage fashion
- **Wearing History**—historic reproduction patterns
- **Vintage Egyptologist**—vintage fashion, Egyptian history
- **Not Your Mamas History**—Public historian, historical interpreter
- **American Duchess**—reproduction shoes
- **S_and_S_Patterns**—historical patterns
- **Bernadette Banner**—time traveler, dress detective
- **Cathy Hay**—Historical sewing and creative cheerleader
- **Costume College**—annual costuming arts conference
- **VirtuousCourtesan**—Slow fashion, historic clothing lover
- **Izabelapriorattire**—historical attire maker
- **Amber Butchart**—Dress historian, forensic fashion expert
- **Abbyelyn**—Historic dress content creator
- **Costuming_drama**—Historic dress content creator